

# Burj Dubai Project

## SUPERVISION CONSULTANT'S INSTRUCTION

To:  
**Samsung Corporation Engineering**



For the attention of **K. J. Kim**

Contract Title: Burj Tower  
 Date of Contract:

Supervision Consultant's Instruction No.: **BDD-TBT/SCI-BD07/714**  
 Date of Issue: **24/07/2007**

**Subject: Bad Cracks at top of columns at L 108 Wing A**

*This Supervision Consultant's Instruction is issued in accordance with and is subject to the terms, conditions and provisions of the Contract. You are hereby instructed as follows:*

We have noticed bad cracks at top of the columns in the above location (see sheets 1 to 3 attached).

Remove the Cracked concrete completely prior to next lift of concreting.

Please raise WIR for our inspection.



9403

SAMSUNG BESIX ARABTEC JV BURJ DUBAI TOWER			
Ref:	File No.:		
CIRCULATION	Act	Conts	Copy
Project Director			✓
Dy Project Director			✓
Commercial Mgr	M		
Admin. Mgr			
Eng/Planning Mgr			✓
Tower Con Mgr			
Podium Con Mgr.			
Logistic Mgr			
Cladding Mgr			
S-05 Finish Mgr			
S-05 Finish Mgr			
S-15, FOH Finish Mgr			
BOI, PS Finish Mgr			
Electrical Mgr			
Mechanical Mgr			✓
QA/QC Mgr			
HSE Mgr			
Circulation Copy			

Samsung  Besix  Arabtec

For and on behalf of  
**Hyder Consulting Middle East.**

*Handwritten signature*

**John Mills**  
 Supervision Consultant's Representative

For and on behalf of  
**TURNER CONSTRUCTION - INTERNATIONAL LLC.**

*Handwritten mark*

Project Manager's Representative

*Please acknowledge receipt by signing, dating and returning the attached copy of this Supervision Consultant's Instruction.*

Received for and on behalf of the Contractor:

Date of receipt :

**Distribution :** • Employer • Project Manager • Quantity Surveyor • Lead Architect • Supervision Consultant



**SOM**

SALAMON, LENOX & BUXTON LLP

**Turner**



**REVISIONS**

NO.	DATE	DESCRIPTION
01	10/10/10	ISSUED FOR CONSTRUCTION
02	10/10/10	ISSUED FOR CONSTRUCTION
03	10/10/10	ISSUED FOR CONSTRUCTION
04	10/10/10	ISSUED FOR CONSTRUCTION
05	10/10/10	ISSUED FOR CONSTRUCTION
06	10/10/10	ISSUED FOR CONSTRUCTION
07	10/10/10	ISSUED FOR CONSTRUCTION
08	10/10/10	ISSUED FOR CONSTRUCTION
09	10/10/10	ISSUED FOR CONSTRUCTION
10	10/10/10	ISSUED FOR CONSTRUCTION
11	10/10/10	ISSUED FOR CONSTRUCTION
12	10/10/10	ISSUED FOR CONSTRUCTION
13	10/10/10	ISSUED FOR CONSTRUCTION
14	10/10/10	ISSUED FOR CONSTRUCTION
15	10/10/10	ISSUED FOR CONSTRUCTION
16	10/10/10	ISSUED FOR CONSTRUCTION
17	10/10/10	ISSUED FOR CONSTRUCTION
18	10/10/10	ISSUED FOR CONSTRUCTION
19	10/10/10	ISSUED FOR CONSTRUCTION
20	10/10/10	ISSUED FOR CONSTRUCTION
21	10/10/10	ISSUED FOR CONSTRUCTION
22	10/10/10	ISSUED FOR CONSTRUCTION
23	10/10/10	ISSUED FOR CONSTRUCTION
24	10/10/10	ISSUED FOR CONSTRUCTION
25	10/10/10	ISSUED FOR CONSTRUCTION
26	10/10/10	ISSUED FOR CONSTRUCTION
27	10/10/10	ISSUED FOR CONSTRUCTION
28	10/10/10	ISSUED FOR CONSTRUCTION
29	10/10/10	ISSUED FOR CONSTRUCTION
30	10/10/10	ISSUED FOR CONSTRUCTION
31	10/10/10	ISSUED FOR CONSTRUCTION
32	10/10/10	ISSUED FOR CONSTRUCTION
33	10/10/10	ISSUED FOR CONSTRUCTION
34	10/10/10	ISSUED FOR CONSTRUCTION
35	10/10/10	ISSUED FOR CONSTRUCTION
36	10/10/10	ISSUED FOR CONSTRUCTION
37	10/10/10	ISSUED FOR CONSTRUCTION
38	10/10/10	ISSUED FOR CONSTRUCTION
39	10/10/10	ISSUED FOR CONSTRUCTION
40	10/10/10	ISSUED FOR CONSTRUCTION
41	10/10/10	ISSUED FOR CONSTRUCTION
42	10/10/10	ISSUED FOR CONSTRUCTION
43	10/10/10	ISSUED FOR CONSTRUCTION
44	10/10/10	ISSUED FOR CONSTRUCTION
45	10/10/10	ISSUED FOR CONSTRUCTION
46	10/10/10	ISSUED FOR CONSTRUCTION
47	10/10/10	ISSUED FOR CONSTRUCTION
48	10/10/10	ISSUED FOR CONSTRUCTION
49	10/10/10	ISSUED FOR CONSTRUCTION
50	10/10/10	ISSUED FOR CONSTRUCTION

**ISSUED FOR CONSTRUCTION**

THIS DRAWING IS THE PROPERTY OF TURNER CONSTRUCTION COMPANY. IT IS TO BE USED ONLY FOR THE PROJECT AND SITE SPECIFICALLY IDENTIFIED HEREON. IT IS NOT TO BE REPRODUCED, COPIED, OR TRANSMITTED IN ANY FORM OR BY ANY MEANS, ELECTRONIC OR MECHANICAL, INCLUDING PHOTOCOPYING, RECORDING, OR BY ANY INFORMATION STORAGE AND RETRIEVAL SYSTEM, WITHOUT THE WRITTEN PERMISSION OF TURNER CONSTRUCTION COMPANY.

NO.	DATE	DESCRIPTION
01	10/10/10	ISSUED FOR CONSTRUCTION
02	10/10/10	ISSUED FOR CONSTRUCTION
03	10/10/10	ISSUED FOR CONSTRUCTION
04	10/10/10	ISSUED FOR CONSTRUCTION
05	10/10/10	ISSUED FOR CONSTRUCTION
06	10/10/10	ISSUED FOR CONSTRUCTION
07	10/10/10	ISSUED FOR CONSTRUCTION
08	10/10/10	ISSUED FOR CONSTRUCTION
09	10/10/10	ISSUED FOR CONSTRUCTION
10	10/10/10	ISSUED FOR CONSTRUCTION
11	10/10/10	ISSUED FOR CONSTRUCTION
12	10/10/10	ISSUED FOR CONSTRUCTION
13	10/10/10	ISSUED FOR CONSTRUCTION
14	10/10/10	ISSUED FOR CONSTRUCTION
15	10/10/10	ISSUED FOR CONSTRUCTION
16	10/10/10	ISSUED FOR CONSTRUCTION
17	10/10/10	ISSUED FOR CONSTRUCTION
18	10/10/10	ISSUED FOR CONSTRUCTION
19	10/10/10	ISSUED FOR CONSTRUCTION
20	10/10/10	ISSUED FOR CONSTRUCTION
21	10/10/10	ISSUED FOR CONSTRUCTION
22	10/10/10	ISSUED FOR CONSTRUCTION
23	10/10/10	ISSUED FOR CONSTRUCTION
24	10/10/10	ISSUED FOR CONSTRUCTION
25	10/10/10	ISSUED FOR CONSTRUCTION
26	10/10/10	ISSUED FOR CONSTRUCTION
27	10/10/10	ISSUED FOR CONSTRUCTION
28	10/10/10	ISSUED FOR CONSTRUCTION
29	10/10/10	ISSUED FOR CONSTRUCTION
30	10/10/10	ISSUED FOR CONSTRUCTION
31	10/10/10	ISSUED FOR CONSTRUCTION
32	10/10/10	ISSUED FOR CONSTRUCTION
33	10/10/10	ISSUED FOR CONSTRUCTION
34	10/10/10	ISSUED FOR CONSTRUCTION
35	10/10/10	ISSUED FOR CONSTRUCTION
36	10/10/10	ISSUED FOR CONSTRUCTION
37	10/10/10	ISSUED FOR CONSTRUCTION
38	10/10/10	ISSUED FOR CONSTRUCTION
39	10/10/10	ISSUED FOR CONSTRUCTION
40	10/10/10	ISSUED FOR CONSTRUCTION
41	10/10/10	ISSUED FOR CONSTRUCTION
42	10/10/10	ISSUED FOR CONSTRUCTION
43	10/10/10	ISSUED FOR CONSTRUCTION
44	10/10/10	ISSUED FOR CONSTRUCTION
45	10/10/10	ISSUED FOR CONSTRUCTION
46	10/10/10	ISSUED FOR CONSTRUCTION
47	10/10/10	ISSUED FOR CONSTRUCTION
48	10/10/10	ISSUED FOR CONSTRUCTION
49	10/10/10	ISSUED FOR CONSTRUCTION
50	10/10/10	ISSUED FOR CONSTRUCTION

**BURJ DUBAI**

TOWER

LEVEL 109

FRAMING PLAN

(MECHANICAL ZONE 4)

DATE: 10/10/10

SCALE: 1/8" = 1'-0"

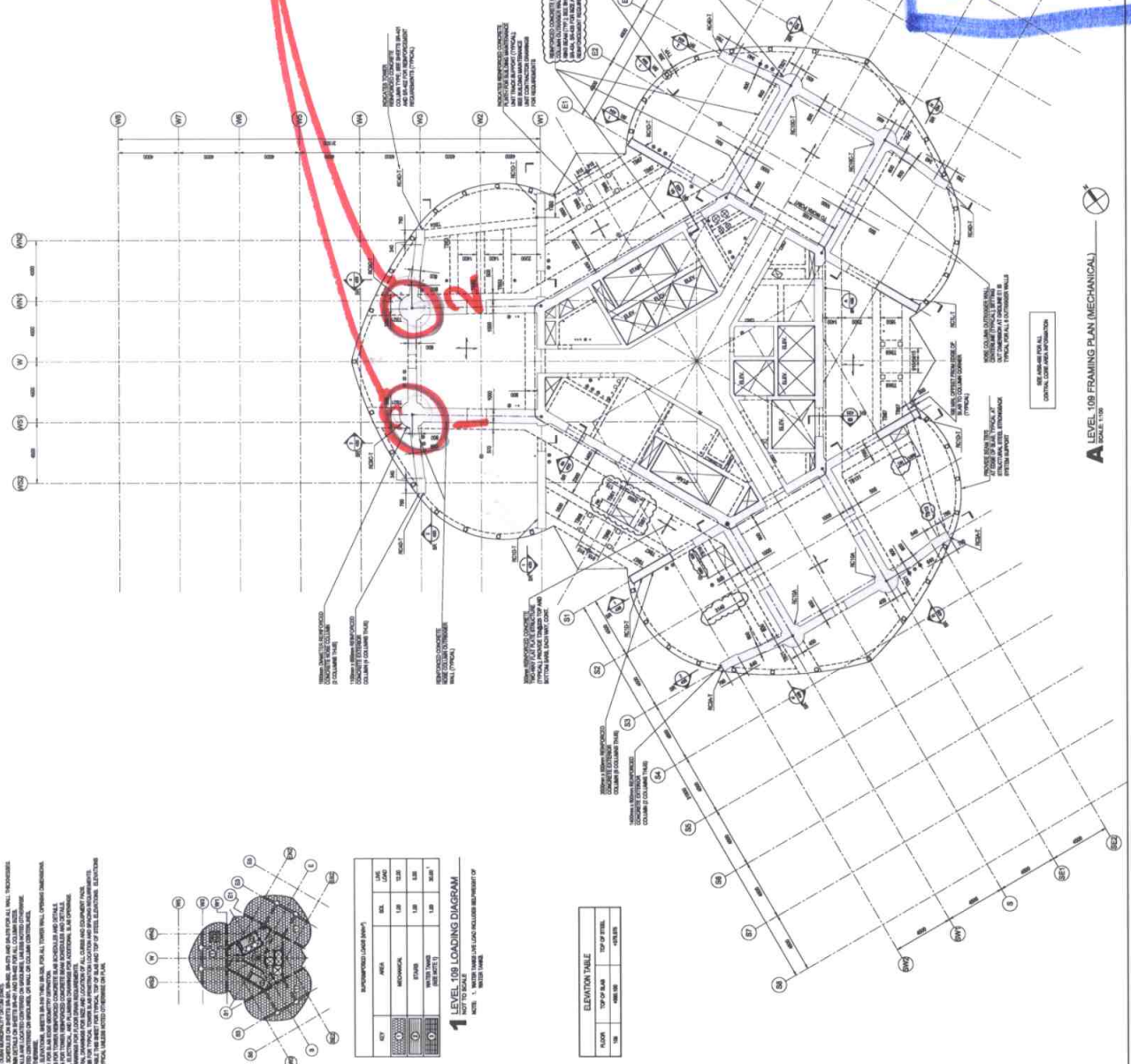
AL-09-109-004

*Handwritten in red:*

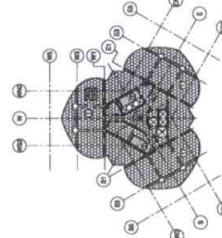
Top of concrete  
109/109  
Circular column  
109/109

*Handwritten in blue:*

Sheet 714  
F-109



- GENERAL NOTES:**
1. REFER TO THE GENERAL NOTES TO THE MECHANICAL ZONE 4 DRAWING FOR FURTHER INFORMATION.
  2. ALL DIMENSIONS ARE IN METERS UNLESS OTHERWISE SPECIFIED.
  3. ALL DIMENSIONS ARE TO FACE UNLESS OTHERWISE SPECIFIED.
  4. ALL DIMENSIONS ARE TO FACE UNLESS OTHERWISE SPECIFIED.
  5. ALL DIMENSIONS ARE TO FACE UNLESS OTHERWISE SPECIFIED.
  6. ALL DIMENSIONS ARE TO FACE UNLESS OTHERWISE SPECIFIED.
  7. ALL DIMENSIONS ARE TO FACE UNLESS OTHERWISE SPECIFIED.
  8. ALL DIMENSIONS ARE TO FACE UNLESS OTHERWISE SPECIFIED.
  9. ALL DIMENSIONS ARE TO FACE UNLESS OTHERWISE SPECIFIED.
  10. ALL DIMENSIONS ARE TO FACE UNLESS OTHERWISE SPECIFIED.



**1 LEVEL 109 LOADING DIAGRAM**

NOT TO SCALE

SCALE: 1/8" = 1'-0"

NO.	AREA	LOAD
1	MECHANICAL	1.8
2	OFFICE	1.8
3	MECHANICAL	1.8
4	OFFICE	1.8
5	MECHANICAL	1.8
6	OFFICE	1.8
7	MECHANICAL	1.8
8	OFFICE	1.8
9	MECHANICAL	1.8
10	OFFICE	1.8

**ELEVATION TABLE**

FLOOR	TOP OF SLAB	TOP OF STEEL	FINISH
109	4.100	4.100	4.100

**A** LEVEL 109 FRAMING PLAN (MECHANICAL)

DATE: 10/10/10

